

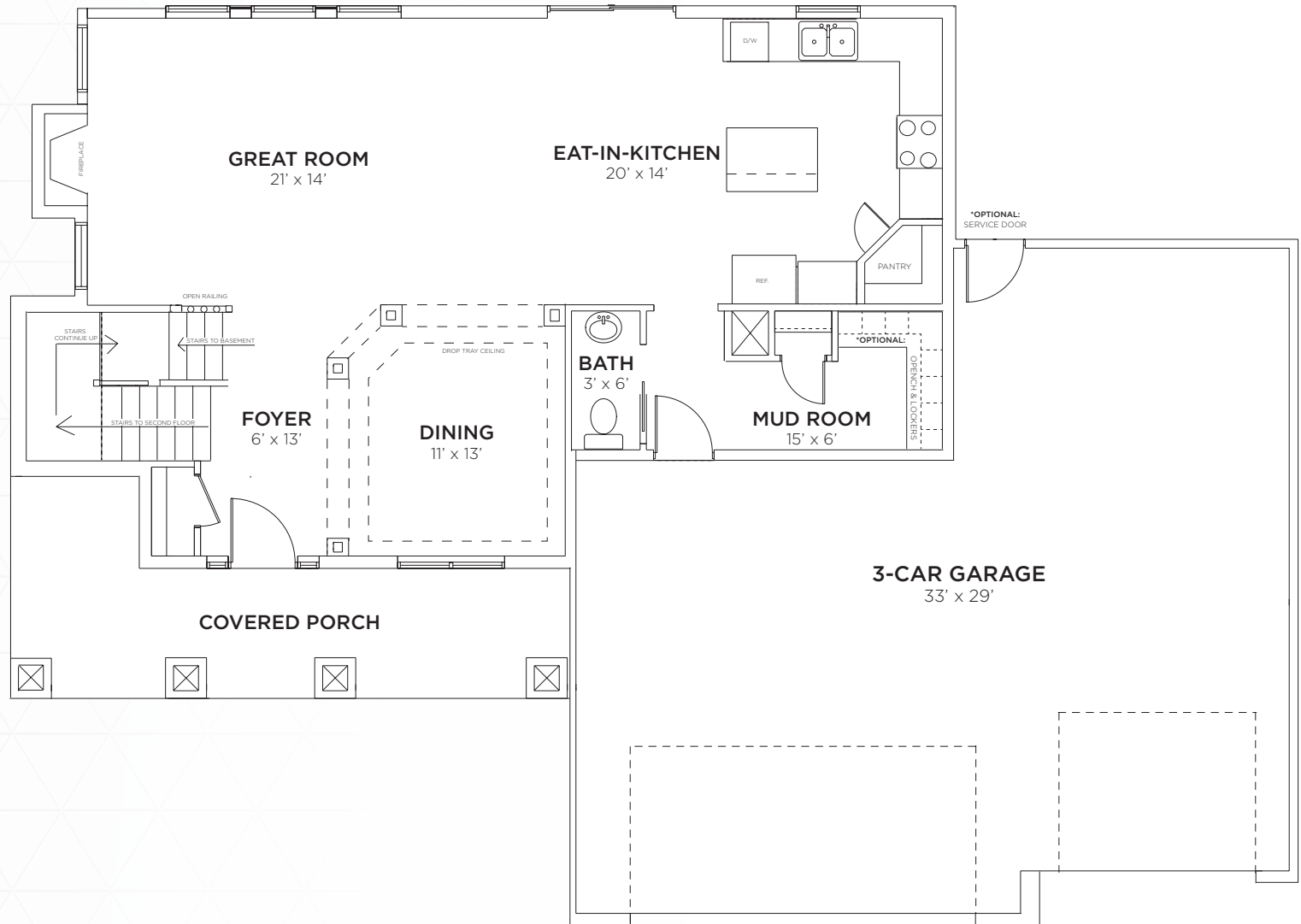


# the CASTLEBERRY

\*DISCLAIMER: Plans and specifications are subject to change without notice.

## *ELEVATION*

Two-Story | 2,339 Sq. Ft.  
4 Bed | 2.5 Bath | 3 Car Garage

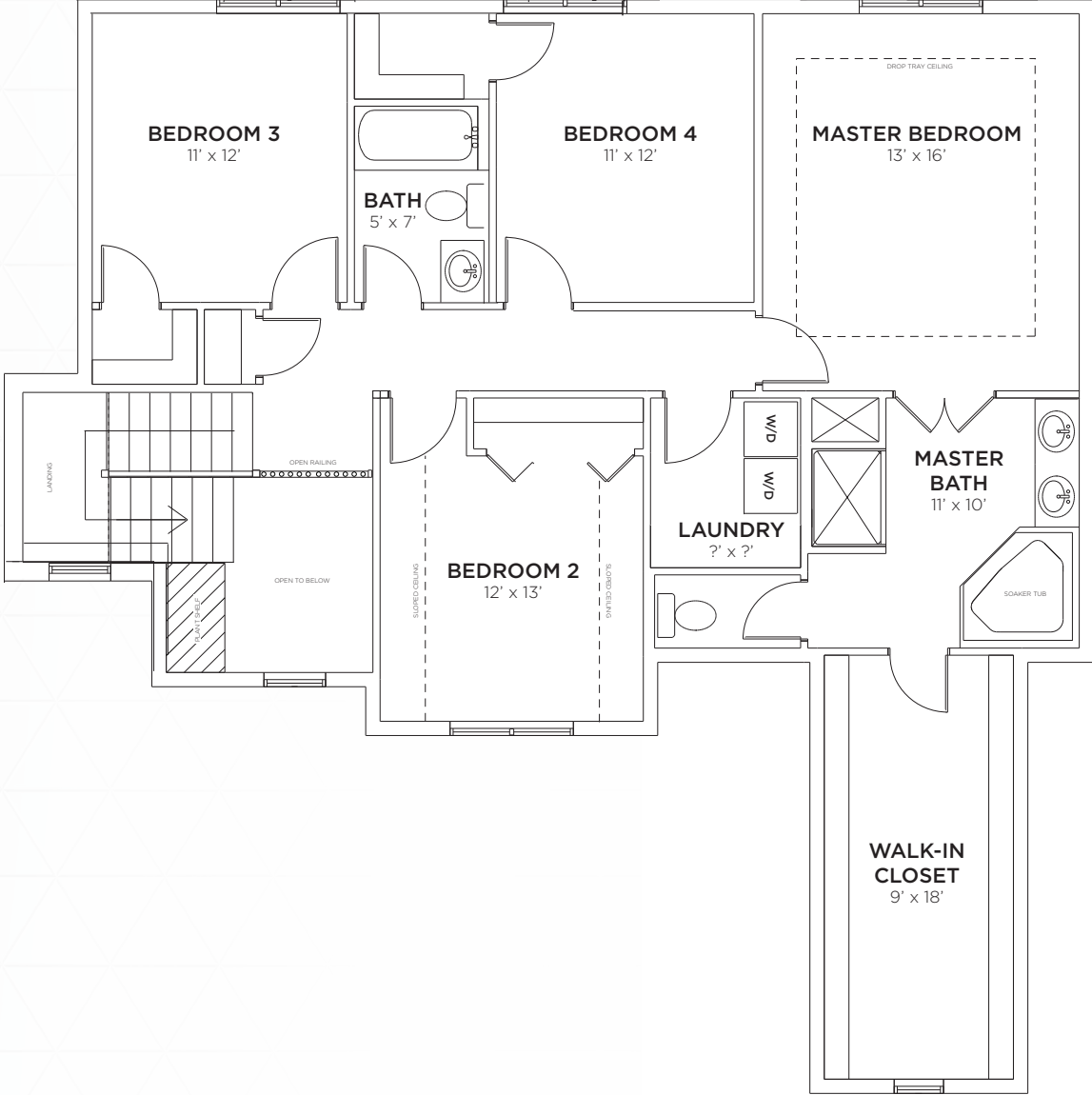


# the CASTLEBERRY

\*DISCLAIMER: Plans and specifications are subject to change without notice.

## FIRST FLOOR

Two-Story | 2,339 Sq. Ft.  
4 Bed | 2.5 Bath | 3 Car Garage



# the CASTLEBERRY

\*DISCLAIMER: Plans and specifications are subject to change without notice.

## SECOND FLOOR

Two-Story | 2,339 Sq. Ft.  
4 Bed | 2.5 Bath | 3 Car Garage